

Complex Safeguarding Annual Report 22/23

Karen Green – Strategic Lead Complex Safeguarding





Children's & Education Services



Overview and Purpose:

- Multi agency co-located hub: Children's Social Care, Police, Health, Trusted Relationship Children's Psychologist, Adult Social Worker, Early Help Team, Missing teams, Probation, virtual links to Youth Justice, Education and Youth Providers.
- Provides joined up response to child sexual exploitation, modern slavery, criminal exploitation and county lines, serious violence that involved young people and links to organised crime and children missing from home and care.
- Intelligence led and provides joint approach to managing the response to complex safeguarding and demonstrates good multi agency coordination and planning in response to emerging safeguarding threats.
- Daily governance meetings, joint risk assessment, mapping, safety planning, joint operations, specialist knowledge and expertise and information sharing
- Links into wider social work teams, Youth Justice and Health systems multi agency partnerships
- Trusted relationship model and understanding of vulnerabilities and harm underpins the approach

Need

Exploitation Type	2019/20	2020/21	2021/22	2022/23
CSE	43%	28%	22%	22%
CCE	55%	59%	54%	60%
Multiple/ Other	9%	15%	14%	19%
Total Number of referrals	279	263	240	242

- There has been an increase in referrals related to CCE; awareness raising has led to understanding and increased identification of this form of exploitation.
- CSE referrals as highlighted in main report have decreased.
- Multiple/ other category includes referrals mainly consists of referrals due to serious violence including Threats to Life.
- Referrals for forms of Modern Slavery outside of CCE and CSE are low.

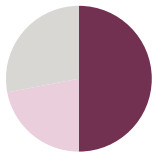
Profile of Children



242 referrals and 102 young people are open to the hub at any time year.

60%

The majority of referrals are for males mainly CCE



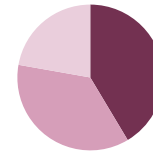
42% were White British, 26 % were dual heritage 19 % were Black, 10 % Asian, 3 % were other

48%

of all referrals were or 15/16 years

66%

The majority of young people were Children in Need ,9% were Child Protection and 34% Were cared for our children.



59% of young people were affected by criminal exploitation, 28% by sexual exploitation, 5% Multiple, 4% threats to Life, 1% modern slavery.

34 %

Additional Needs, SEND

40%

Alternative provision

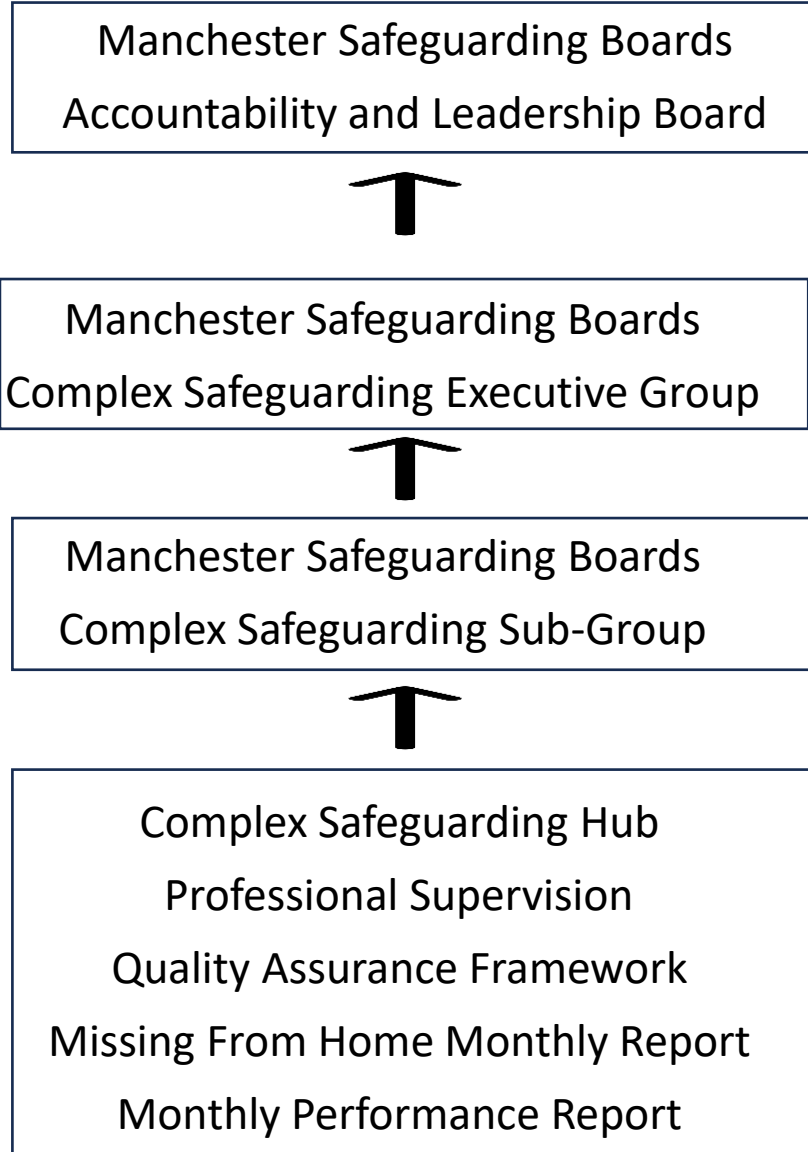


Children's & Education Services

CSH Governance



MANCHESTER
CITY COUNCIL



Complex Safeguarding Team Offer



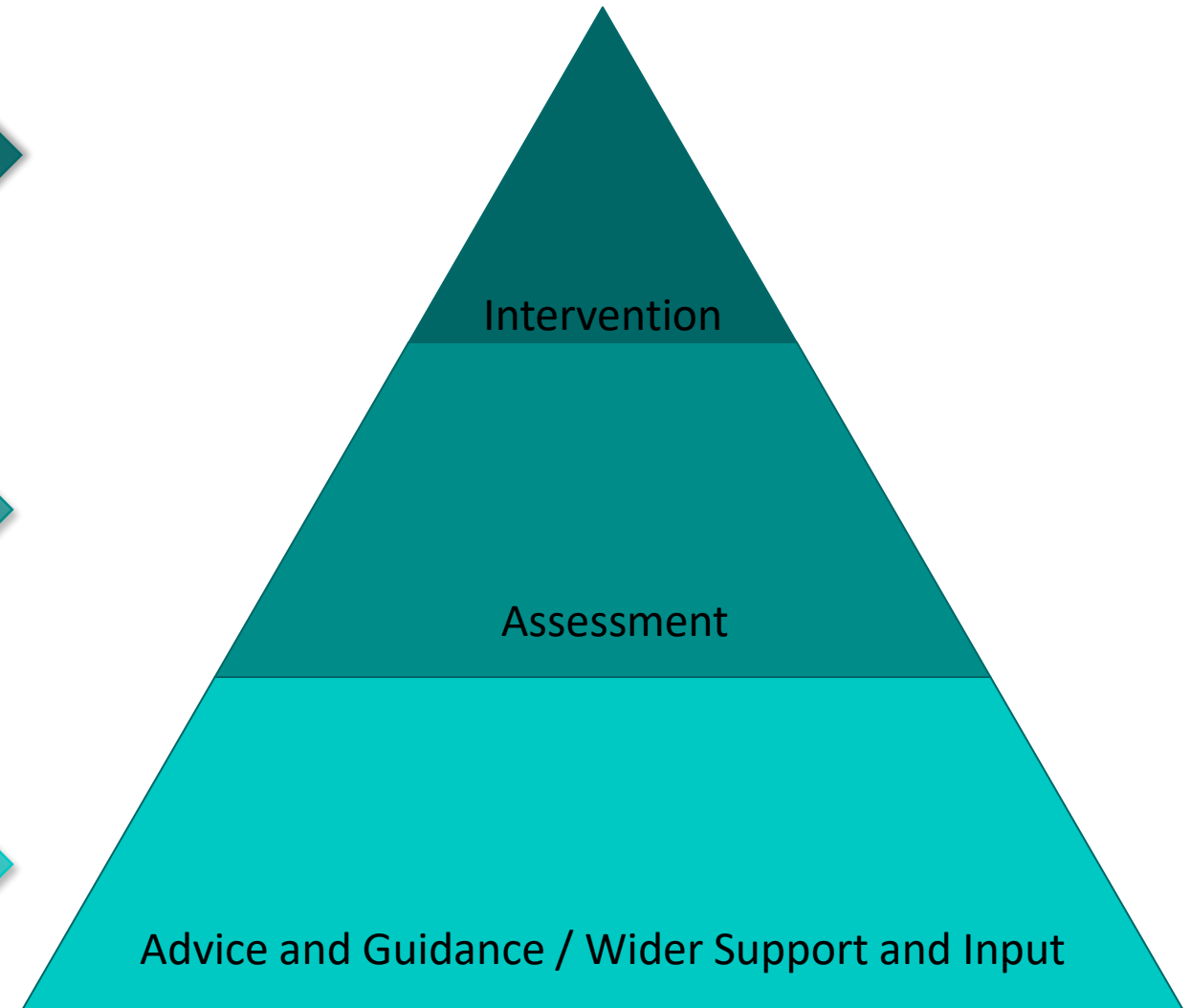
- Bespoke interventions
- Young person led
- Based on trusted relationships and trauma informed approach
- Joint approach with locality social workers and team around the child
- Focus on aspiration and building resilience



- Exploitation assessments bespoke to child provides specialist knowledge.
- Pulls together information from child, family / carers and partners
- Consideration of who is best place to undertake intervention – clarity of roles of professionals

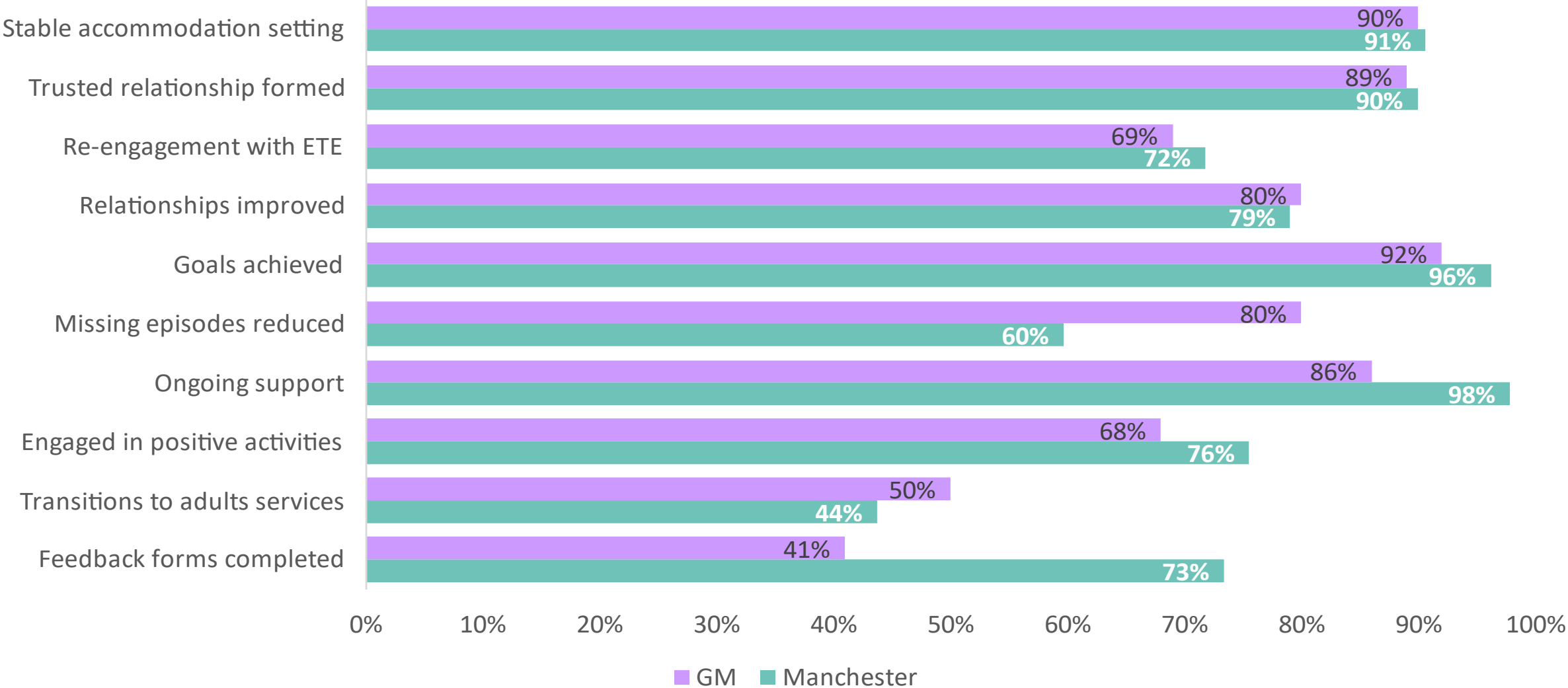


- Delivery of Complex Safeguarding training across the partnership
- Social Work locality links with input into MFH / Edge of Care / Channels Panels.
- Links into community / voluntary sector groups
- Sharing learning and input into national research.



Impact – Children's Outcomes

Outcomes recorded on closure to Complex Safeguarding Teams 2022-23 Total



Impact – Case Study - Cole

- Cole is a 14-year-old boy - he started going missing from Home for extended periods. Cole had indicators of grooming as he was going missing and returning home in expensive clothing. There were concerns he was groomed by an adult male
- He was assessed by CSH as being at high risk of CCE; a joint disruption plan was put in place immediately. The CSH social worker spent time with Cole and was able to engage him building a trusted relationship. She worked closely with the local Youth club staff to upskill them as Cole was attending their sessions. Cole was on the cusp of exclusion from school; this was challenged and CSH and education developed a plan to support Cole to reintegrate back into school.
- The police served a child abduction warning notice (CAWN) was issued to the perpetrator. Police were able to arrest and then remand the male. This disrupted the exploitation and subsequently MFH reduced, and he re-engaged in education. Partnership working included mapping meetings took place with another LA and Manchester Children's Services and Police to ensure a cross border disruption plan was in place,
- Cole's missing from home incidents started to increase again when the perpetrator was released from custody, The probation officer for the adult male began to work with CSH team police increased visits to the adult man which uncovered a breach in his license, and he was re-arrested as Cole was present
- **Impact**
- Cole is now back in education and has a positive relationship with his Complex Safeguarding Social Worker and Complex Safeguarding police officer whose visits to Cole are ongoing are continuing to support



Children's & Education Services



Impact - Joint Operations

The Complex Safeguarding Hub continue to deliver prevention, disruption and enforcement activity in relation to child exploitation and organised crime through joint operations. Over the last year there have been 7 reactive Operations, these are centred around both Child Sexual Exploitation and Child Criminal Exploitation.

- Operation BROCK – Multi victim investigation to CSE, two victims trafficked around the city centre and Greater Manchester, where they reported being victim to sexual offences.
- Operation OXUS – Multi offender, investigation to a serious assault of a victim for CCE, which occurred in Openshaw Manchester
- Operation SWING – Multi victim, CSE investigation cross border between Manchester, Tameside and Rochdale
- Operation DARROWBY – Multi offender, CSE and Sexual Grooming Investigation for a looked after child – Central Manchester
- Operation PLYMOUTH – Multi victim investigation to CSE victims who have been sexually assaulted in a vape shop in Newton Heath
- Operation HILLINGDON – Multi offender, CSE operation of a vulnerable female, including related assault, threats and witness intimidation
- Operation WESTWING – Multi-victim operation around CCE and county lines, involving young males trafficked to Scotland and Cumbria.

Impact - Police Activity

Over the last year, the Complex Safeguarding Police team have been extremely active; Some of the activity carried out were as follows;

- 30 Arrests
- Executed 11 Search Warrants,
- Issued 14 Child Abduction Warning Notices (CAWN's).
- Obtained a Force Marriage Protection Order
- 8 suspects have been charged with a wide range of offences, such as;

Rape of a Female under 13, Making & Possession of Indecent Images of a child & Sexual Grooming,

Sexual activity offences & Sexual Assault by touching,

Drugs offences, Failing to comply with a section 49 notice to disclose the key to protected information,

Possession of a bladed article & offensive weapon.

Assaults, Including S.18 occasioning Grievous Bodily Harm with Intent, & S.47 Assault occasioning Actual Bodily Harm,

Child abduction, Indecent exposure, Witness intimidation & Criminal damage.

Missing from Home and Care

- In 22/23 there have been 4958 missing reports in relation to 1381 children, a rise from the previous year where there were 4280 reports linked to 1353 children.
- There were 2976 IRIs carried out during 20221/2023 and timeliness of return interview is good with overall 73.22 % of IRIs were completed within 72 hours. Where there are delays this is purposeful and due to either children's circumstances
- Staying out and meeting with friends/peers is the overriding reason why young people go missing from care.
- A parenting offer is being delivered by the Children's Society to prevent and reduce recurrent missing.

Peer audit programme between MFH Team and the children society drives good quality practice.

- Monthly missing home report provided scrutiny and oversight on the high risk MFH
- MFH Panels provide an opportunity for multi-agency information , safety planning sharing and review of arrangements to reduce missing incidents and promote diversionary positive activities for young people.

Priorities for the Future:

Transitions

- Further develop our Transitions panel and track outcomes for young people who receive support via this pathway. We will ensure that this is a young person-led panel where young people's voices are central to decision-making and the development of the service.
- Work with colleagues across the partnership to ensure children have the right support in place at all stages of their lives, including key transition from primary into secondary school.

Equity, Diversity, and Inclusion:

- Develop better networks with communities/partners to ensure we identify children at risk of exploitation, enabling better links to support their aspirations and target children at risk.
- Ensure that all children reported missing receive a fair and equitable service.
- CSH to attend school clusters to discuss awareness of underrepresentation themes in the cohort and support early intervention.
- Implement the WISE assessment tool, an evidence-based model for understanding young people's risk, vulnerability, and strengths, shifting focus from risk and deficits to enhancing safety, stability, and well-being.

Priorities for the Future:

- Ensure an anti-racist and anti-discrimination lens within the CSH, considering referral pathways and reducing barriers to services for marginalised groups.
- Focus on improved joint supervision to support having one comprehensive plan for all children, ensuring their needs are fully considered.

•**Young Person Focused Assessment**

Implement the WISE assessment tool, an evidence-based model for understanding young people's risk, vulnerability, and strengths, shifting focus from risk and deficits to enhancing safety, stability, and well-being. We will deliver this in line with the Achieving Change Together model principles and the Adolescent Safeguarding Framework.

Children Missing from Home and Care:

Ensure that all children reported missing receive a fair and equitable service which is safe and proportionate through delivery and ongoing review of updated Missing from Home and Care Policy which is informed by children's views, research and analysis of our data.